

**cor**

the pure analogue amplifier

**PMC**<sup>®</sup>



**cor** [/kɒr/, kɔːr]: (*anatomy*) **heart**; (*figuratively*) **soul, mind**

Peter Thomas, Owner &  
Oliver Thomas, Head of Design



## WE ARE DRIVEN

We believe that music is what really matters. It's what moves us and gives us our passion for what we do — bringing emotion and engineering together. In our designs, science serves sound in our quest to present music as naturally as possible, exactly as its creators intended.



Sound is completely analogue in nature, not digital. So our latest product keeps it that way. The audio is neither upsampled, downsampled, oversampled, nor converted in any way, from the input to the output.



Wisseloord Studios, The Netherlands: one of most technologically advanced facilities in the world. Equipped with PMC loudspeakers and amplifiers.



## PMC: AT THE HEART OF MUSIC

Everything in the audio chain has an effect on the end result. For over 25 years, the Emmy-winning design philosophy behind PMC's loudspeakers has been to eradicate everything that isn't music, such as unnatural resonance, distortion and noise. This has taken years of obsessive attention to detail at all stages of product design, from component selection and placement to construction, testing, and — most of all — listening. Our success is plain; PMC loudspeakers are now found at all stages of music creation, used by the world's leading composers, in the finest recording, mixing and mastering studios, and in audiophile listening environments everywhere. Our intimate involvement at all levels of musical creativity means that we know what it is to capture all the emotion in a performance.

We've now used this knowledge to bring you the **cor** integrated amplifier, for analogue purists.

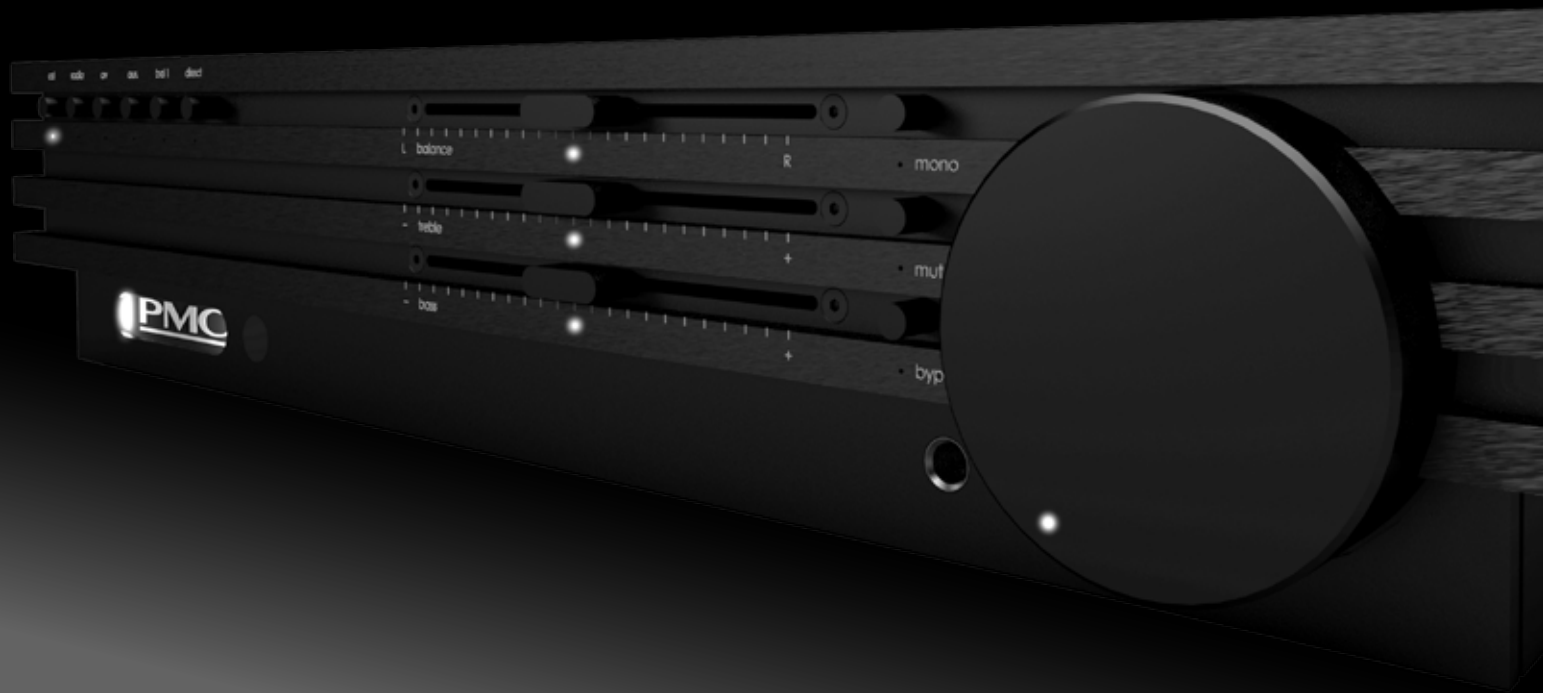


BBC Maida Vale Studios, London, featuring PMC's first ever loudspeakers and amplifiers: still in operation today.

## LOUDSPEAKERS & AMPLIFIERS

For as long as PMC has existed, the company's designers have also been making amplifiers. The very first loudspeakers built under the PMC name were the active BB5s, which included amplification designed and built by PMC. This system is still used as the reference at BBC studios in London. When you listen to a recording from BBC Maida Vale, you're hearing audio recorded using PMC amplification.

The aim has always been to one day produce amplification with the same design ethos and high resolution as our loudspeakers, with the same qualities that have made the PMC reputation worldwide: musicality, transparency and neutrality. The **cor** integrated amplifier is the result of these long years of planning, conception and advanced design — and it can make any loudspeaker excel.



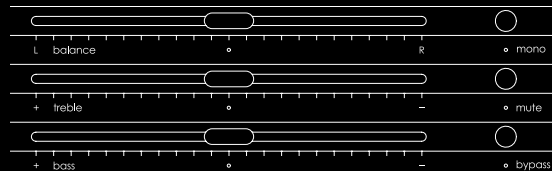
## INTRODUCING COR

The **cor** integrated amplifier offers the ultimate pure analogue experience. It can drive virtually any loudspeaker, delivering reassuring levels of power with refinement and transparency, yet remaining neutral, imparting no character of its own. It faithfully reproduces vivid, dynamic performances with soul: all the magic of music.



## TAKE CONTROL

From the outside, the **cor** is a masterpiece of elegant minimalism, yet it offers you the flexibility to achieve the perfect sound on every track, without moving from your armchair. The single volume control, together with the tone and balance faders, are motorised using the very finest technology from professional audio mixing consoles, and the delicate audio signal passing through the controls remains entirely in the analogue domain. There is even a defeat option so that the signal is only routed via the volume control, if desired.

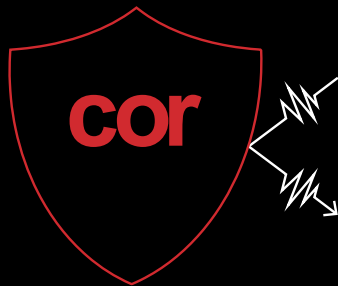






## THE POWER TO DELIVER

At the heart of this design sits a pure analogue Class A/B power amplifier. Combining cutting-edge and innovative technology with classic discrete design, the **cor** integrated offers astonishing resolution and control, and conveys the emotion desired by all audiophiles. In technical terms, PMC's advancement of the pioneering work of Bell Laboratories' Sidney Darlington ensures that the end-to-end signal paths are kept as short as possible, with minimal junctions, reducing thermal lag distortion. With enormous dual independent power supplies, the **cor** integrated has ample power in reserve, and is capable of driving virtually any loudspeaker without leaving its own sonic imprint.



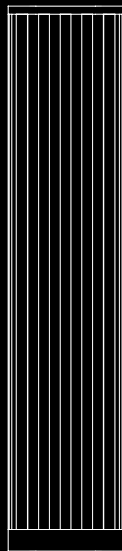
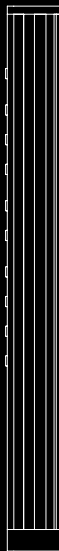
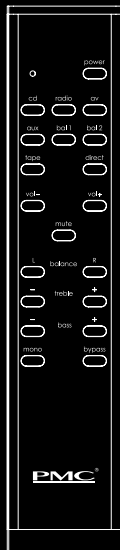
## KEEPING IT PURE

As soon as you group precision components together, you introduce the possibility of interaction and signal taint. A key PMC design obsession is colouration, and how to achieve purity by excluding it. All of the signal routing within the **cor** integrated is electronically balanced to eradicate electromagnetic fields and keep audio clean and unblemished. To further exclude interference, the motorised controls have their own power source. It is entirely independent of the **cor**'s toroidal power supply, which is sheathed in a custom-built MuMETAL® housing designed to keep the adjacent components isolated from the effects of high-power mains current.



## THE INS & OUTS

The **cor** integrated has five sonically identical inputs, including a balanced connection for pro audio-style equipment. Pre-amplifier outputs on the rear panel allow you to connect additional power amplification for system upgrades. There's also a direct input, so the power amp section can be connected to a home theatre system and used to drive the main channels in a multi-channel setup, offering amazing musical performance without the need to rework your wiring.



## SITTING COMFORTABLY

Once you're in your listening position, why would you ever want to move? The extruded aluminium remote control allows you to make any volume, balance or tonal adjustments you require at the touch of a button. In keeping with the **cor** philosophy, all changes made via the remote control are still made in the analogue domain — no digital conversions are involved.





## UNRIVALLED SOUND WITHOUT SPEAKERS

For listeners that want the music delivered directly via high-quality headphones, the **cor** integrated features an audiophile, auto-sensing Class A/B headphone amplifier. Whatever the sensitivity of the connected headphones, the **cor**'s headphone output has enough drive to make them sing, whilst protecting them from overload and maintaining a musical, neutral and transparent sound. Rest assured, your headphones will never sound so good.



## ALWAYS TESTING — ALWAYS LISTENING

We know one component can make or break a product. That's why we test, record and measure each one that goes into our designs. But measurements alone are not enough. Our customers don't tick values off on a list, they listen with their ears — so we do, too. Each premium-quality component has been selected by ear after, in many cases, hundreds of individual listening tests.

## Specification overview

Type	Pure analogue Class A/B integrated amplifier
Inputs	1 x balanced, 4 x single-ended, direct in
Outputs	4mm binding posts, preamp out

## Preamplifier

Frequency response	20Hz - 20kHz +0/-0.2dB 5Hz - 80kHz +0/-1dB
Maximum gain	15dB
Tone controls	+/- 10dB
Input impedance	25kOhms, unbalanced >14kOhms, balanced
THD	0.001% at 1kHz <0.005%, 20Hz - 20kHz, 80kHz measurement bandwidth
IMD	<0.001% SMPTE
Noise	-100dBV A-weighted
Maximum input	5.5Vrms
Maximum output	10Vrms

## Power amplifier

Rated output power, 230V mains

95W into 8Ohms

140W into 4Ohms

Frequency response

20Hz - 20kHz +0/-0.1dB

5Hz - 80kHz +0/-1dB

Input impedance

23.5kOhms

Sensitivity

1V = 100W into 8Ohms

Gain

28.9dB

THD (Rated output power into 8Ohms)

0.001% at 1kHz

<0.01%, 20Hz - 20kHz, 80kHz measurement bandwidth

Noise

-101dB A-weighted re. rated output

Output Impedance

<0.05Ohms, 20Hz - 20kHz

Damping factor

>160 into 8Ohms, 20Hz - 20kHz

## General

Dimensions

**W** 432mm **H** 87.5mm **D** 401mm (inc. feet)

Weight

12kg



This document should not be construed as a commitment on the part of The Professional Monitor Company Limited. The Professional Monitor Company Limited will not assume responsibility for errors that may appear in this document. Information may be subject to change.

Copyright © 2017. All rights reserved

**THE PROFESSIONAL MONITOR COMPANY LIMITED**

Holme Court Biggleswade SG18 9ST UK

T +44 (0)1767 686300 F +44 (0)870 4441045

E [sales@pmc-speakers.com](mailto:sales@pmc-speakers.com) W [www.pmc-speakers.com](http://www.pmc-speakers.com)



Reg No: 3328009

Item no. 836/PMC stock code 15381/May©2017